



100% inspectable
100% inspectable
100% inspeccionable
100% ispezionabile

THE EUROCLASS FIRE
RESISTANCE CLASSIFICATION SYSTEM
SYSTÈME DE CLASSEMENT EN RÉACTION
AU FEU EUROCLASS

SISTEMA DI CLASSIFICAZIONE
ANTINCENDIO EUROCLASS

A1 _ incombustible

FINISHES _ FINITIONS _ FINITURE

The top of the panel is available in

- > antistatic PVC
- > static dissipative PVC
- > conductive PVC

La finitions supérieure du panneau est disponible en

- > PVC antistatique
- > PVC statique dissipateur
- > PVC conducteur

La finitura superiore del pannello è disponibile in

- > PVC antistatico
- > PVC statico dissipativo
- > PVC conduttivo

PERFORATIONS _ PERFORATIONS _ FORATURE

Perforated areas

- > round: perforated areas 42% or 31% or 17%
- > slotted perforated areas 47%

Pourcentages de zones perforées

- > Trous ronds: zones perforées 42% ou 31% ou 17%
- > Fentes: zones perforées 47%

Percentuali di area forata

- > fori rotondi: area perforata 42% o 31% o 17%
- > fori asolati: area perforata 47%

To provide easy **ventilation and the safety of installations in the technical rooms**, CBI Europe offers **Metal Air Panel**. The new system of raised access floors, which consists of Metal Air modular panels in post-painted galvanized steel, thickness 38 mm, size 600 x 600 cm resting on standard steel structures.

The Metal Air panels, with slotted or rounded holes, in addition to the normal benefits of overhead systems, guarantee **maximum ventilation systems for the security of the data center, IT and technical areas or service areas**.

Metal Air can be easily and repeatedly raised and rehoused for maintenance, interventions or changes.

The panel is provided in four different versions, with round, slotted and perforated areas in different percentages.

Afin d'assurer une **efficace ventilation et la sécurité des installations dans les locaux techniques**, CBI Europe Vous offre **Metal Air Panel**.

Le nouveau système de planchers techniques surélevés : composé de panneaux modulaires de type panneaux Metal Air préalablement verni en acier galvanisé, 38 mm d'épaisseur, mesures 600 x 600 cm reposant sur des structures en acier standard. Les panneaux métalliques à air, avec trous ou fentes, en plus des prestations classiques des systèmes de planchers surélevés, ils garantissent une **ventilation maximale pour la sécurité des banques de données, des domaines informatiques ou techniques et des services locaux**.

Les panneaux métalliques à air peuvent être facilement soulevés à plusieurs reprises et relégués pour manutention, intervention ou d'éventuels changements.

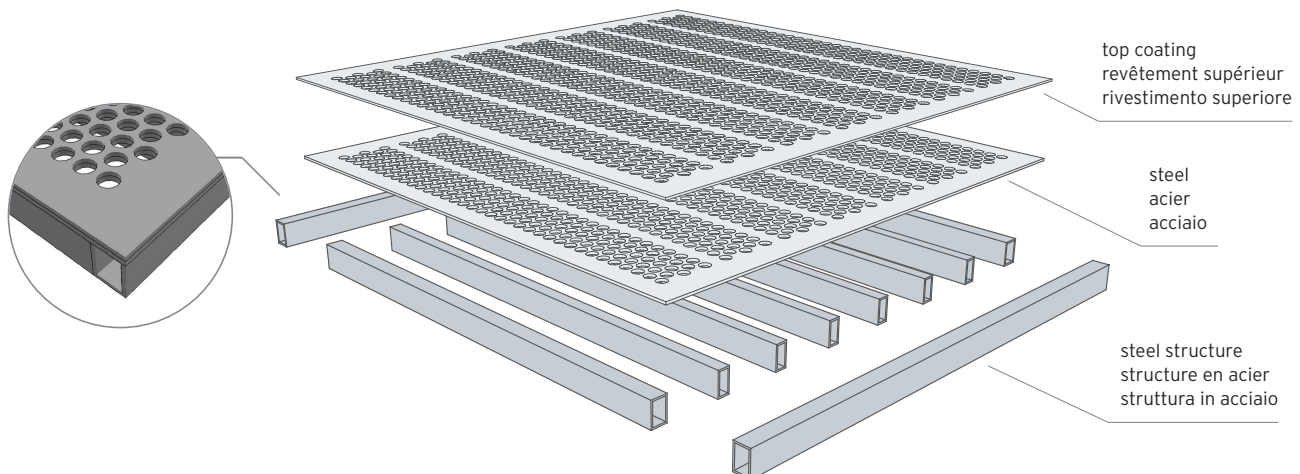
Le panneau est disponible avec de trous ronds ou des fentes, en quatre versions ronde ou fendue et avec différents pourcentages de zones perforées.

Per agevolare al massimo la **ventilazione e la sicurezza degli impianti nei locali tecnici**, CBI Europe propone **Metal Air Panel**. Il nuovo sistema di pavimenti tecnici sopraelevati è composto da pannelli modulari tipo Metal Air in acciaio zincato postverniciato, spessore 38 mm, di dimensioni 600 x 600 cm poggianti sulle strutture standard in acciaio.

I pannelli Metal Air, forati o asolati, oltre ai normali vantaggi dei sistemi sopraelevati, garantiscono la **massima ventilazione degli impianti per la sicurezza di data center, aree tecniche o informatiche e locali servizi**.

Metal Air può essere facilmente e ripetutamente sollevato e rialloggiato per manutenzioni, interventi o eventuali cambiamenti.

Il pannello è disponibile con fori tondi o asolati in quattro versioni rotonde o asolate e con diverse percentuali di area forata.

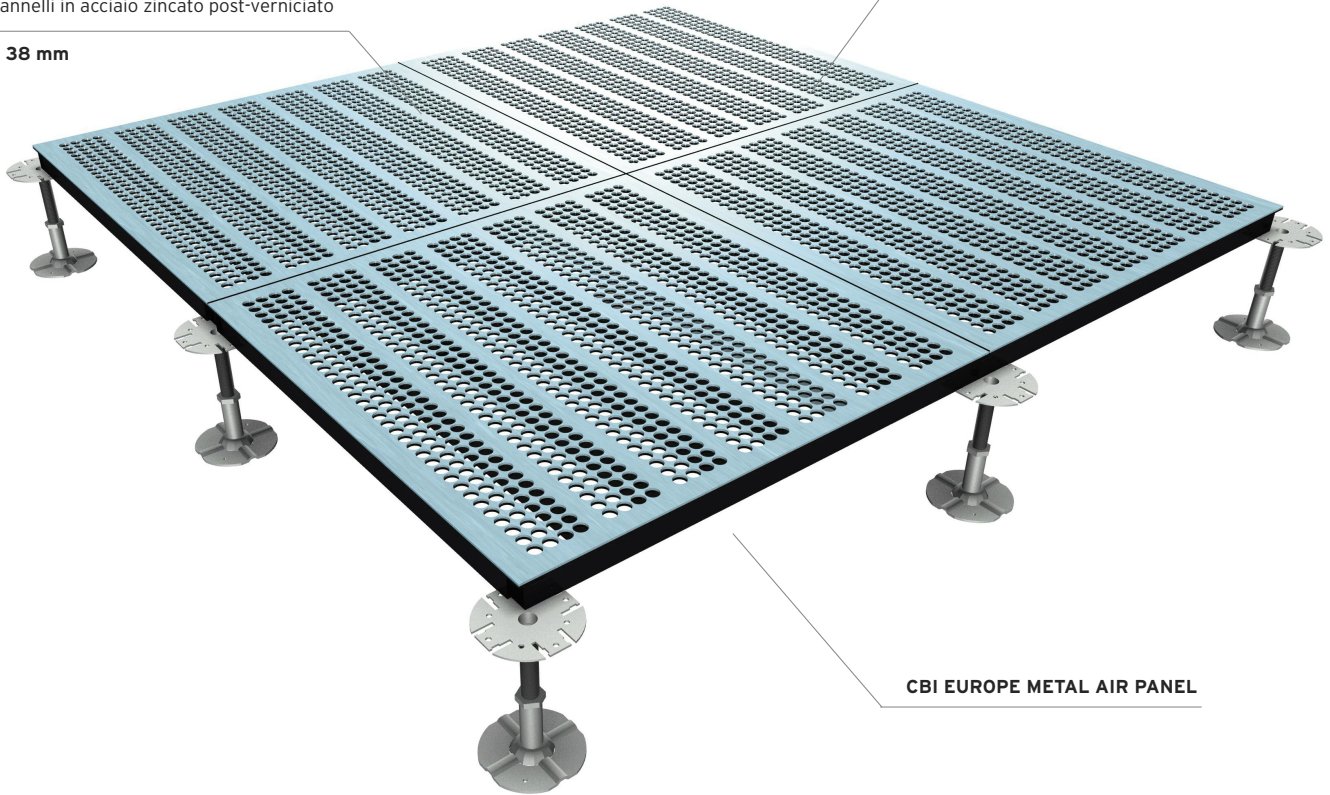


BARE PANELS

post-painted galvanized steel panels
 panneaux en acier galvanisé post-peint
 pannelli in acciaio zincato post-verniciato

h 38 mm

 = 60 x 60 cm



CBI EUROPE METAL AIR PANEL

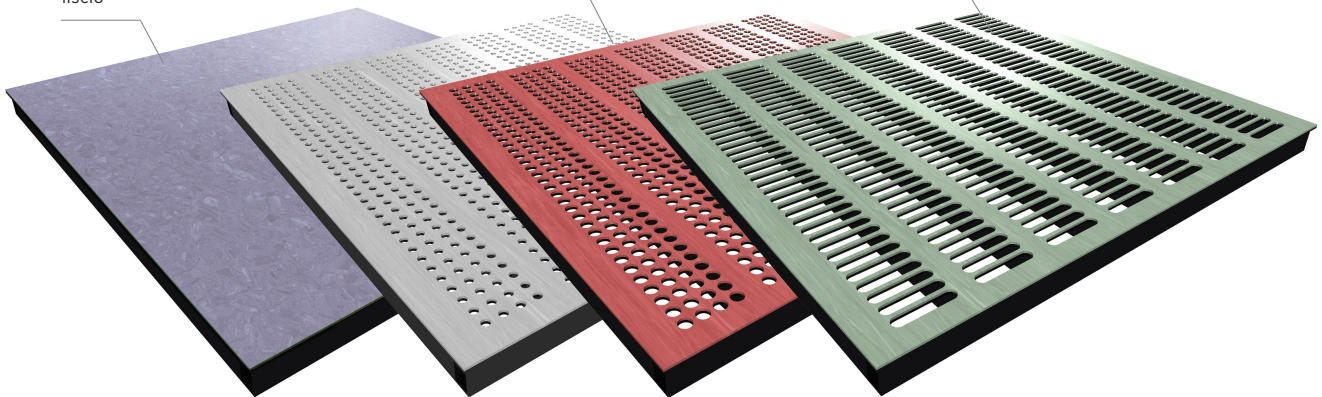
smooth
 lisse
 liscio

perforation
 perforation
 foratura

➤ $\varnothing 8$ ➤ $\varnothing 12$ ➤ $\varnothing 14$ mm

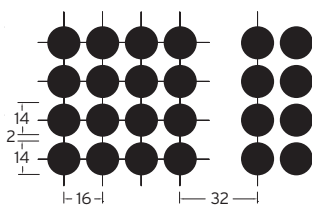
slots
 fentes
 asolatura

➤ 60 x 12 mm

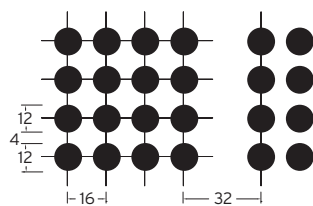


PERFORATIONS _ PERFORATIONS _ FORATURE

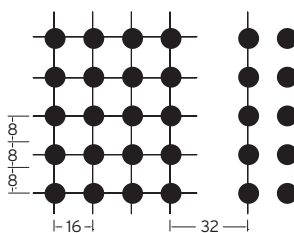
AP1/PTS
 $\varnothing 14$ mm = 42%



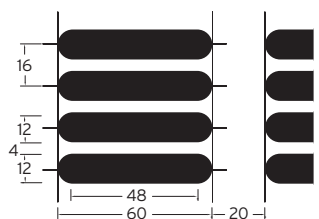
AP2/PTS
 $\varnothing 12$ mm = 31%



AP3/PTS
 $\varnothing 8$ mm = 17%



AP4/PTS
 $\varnothing 60 \times 12$ mm = 47%



member_socio



CBI Europe S.p.A.
 Via Mons. A.O. Romero, 14
 Località San Biagio
 60027 Osimo (AN) _ Italy
 tel + 39 071 71 08 688

administration _ amministrazione:
 fax +39 071 71 08 635
 order _ ordini: fax +39 071 71 08 561
 info@cbi-europe.com
www.cbi-europe.com